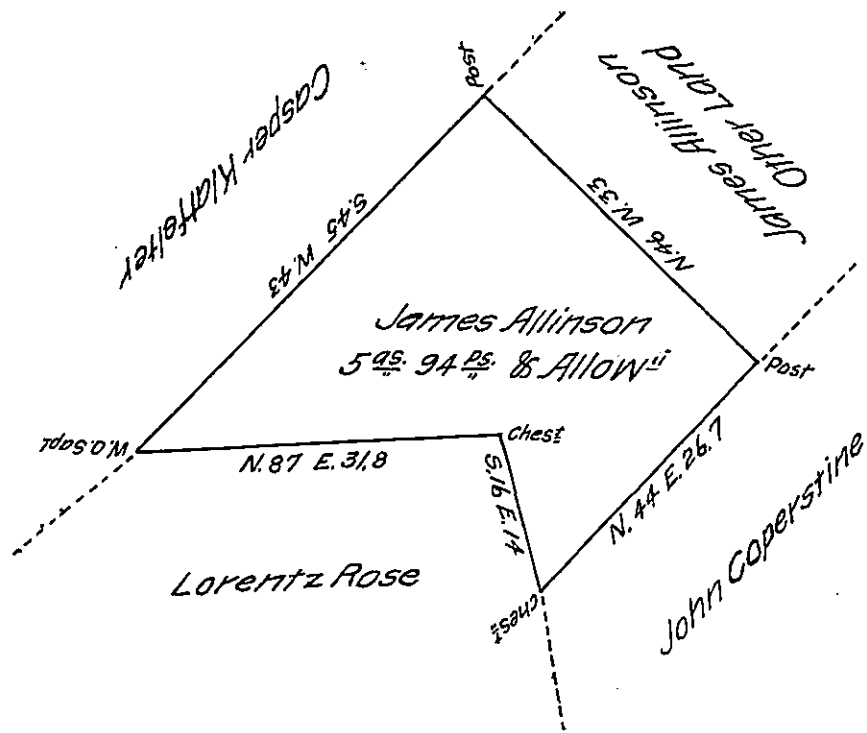


FORM NO. 1.



A Draught of a Tract of Land situate in Shrewsbury Township in the County of York Surveyed the 7th day of September 1803. In pursuance of a warrant bearing date the 18th day of August 1803. Containing as above set forth Five Acres & Ninety-four perches & Allowance of Six & Cent.

By Jno. Eichelberger, D.S.

To Samuel Cochran, Esq. }
Surveyor General }

Job Spangler, D.S.

IN TESTIMONY that the above is a copy of the original remaining on file in the Department of Internal Affairs of Pennsylvania, made conformably to an Act of Assembly approved the 16th day of February 1833, I have hereunto set my hand and caused the Seal of said Department to be affixed at Harrisburg, this fifth day of October, 1907.

Henry Howard
Secretary of Internal Affairs.